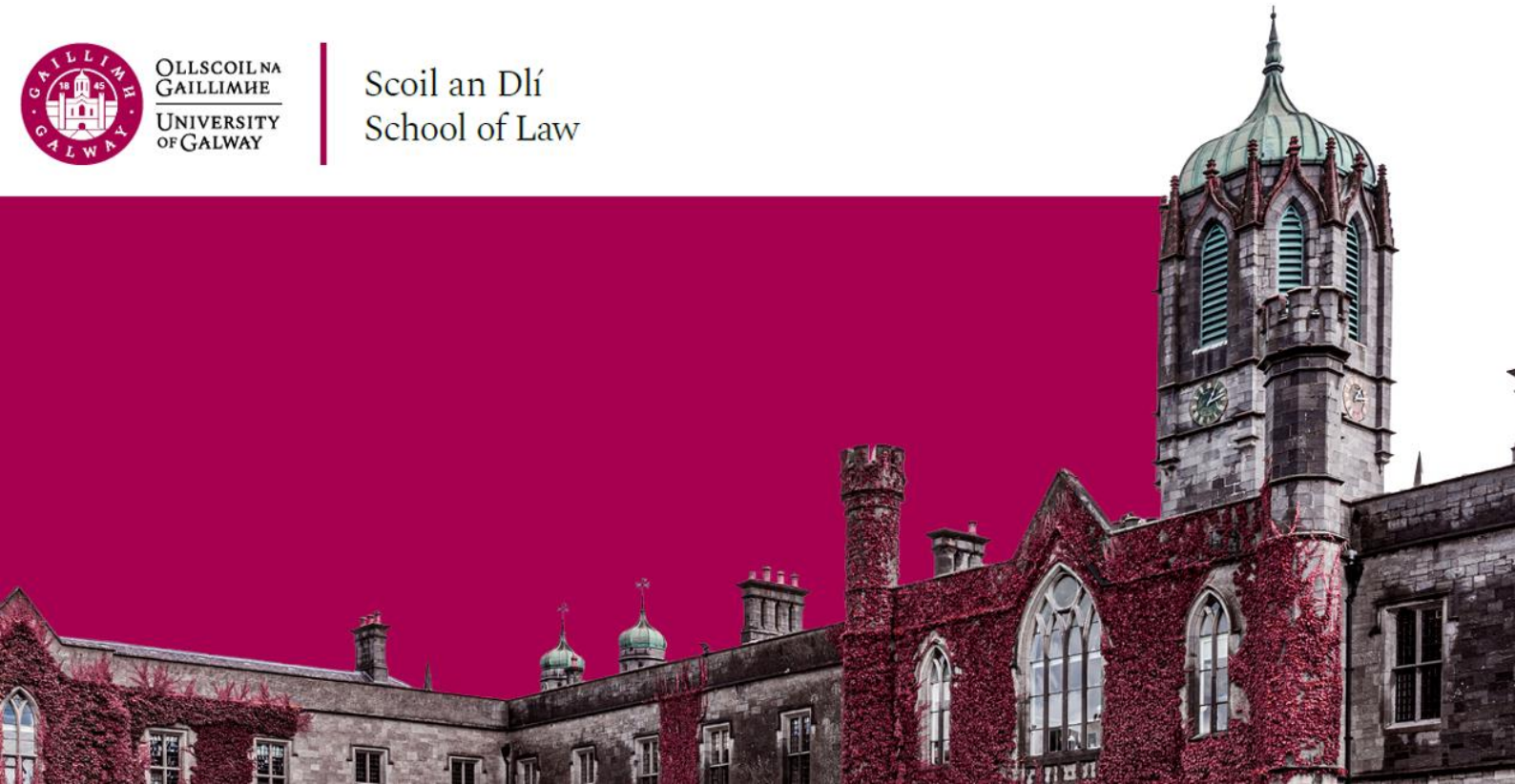




OLLSCOIL NA  
GAILLIMHĒ  
UNIVERSITY  
OF GALWAY

Scoil an Dlí  
School of Law



# VISITING STUDENTS LAW GUIDE 2023-2024

Everything you need to know for the year ahead

*Scoil an Dlí*

Leabhrán Acadúil

2023 -2024

*School of Law*

Academic Booklet

---

2023 - 2024



Please note that the information contained in this document is subject to change.

# Fáiltiú | *Welcome*

September 2023

Dear Student,



We are pleased to welcome you back to the School of Law at the University of Galway for academic year 2023-24. Since 1849, our School of Law has been delivering innovative legal education in a dynamic School dedicated to impactful, high quality legal research.

We have over 800 undergraduate and postgraduate students, over 40 academic staff, a range of undergraduate and postgraduate programmes, and exciting clinical legal education opportunities.

We emphasise student-focused, research-led teaching delivered in a supportive and intellectually challenging environment. We hope that all of this will combine to make your studies with us this year exciting and challenging.

The School is passionate about research that meets the highest standards of scholarship, informs your learning, and engages with current societal challenges, impacting public debate and informing government policy. Our contribution to public policy has never been more important. Equally, the contributions that you will make as you embark upon your professional life have the potential for significant impact.

These are exciting times to be studying law, both within the classroom and in the co-curricular activities you will be undertaking. The graduate attributes you acquire throughout your degree and your flexibility in adapting to new learning environments will combine to ensure that you develop a wide range of knowledge, skills, and dispositions that will serve you well as you prepare for your career.

My colleagues and I look forward to working with you over the course of the academic year and wish you well with your studies. As ever, please let us know how you are finding your studies and if there are any ways you think we could improve the educational environment at the School of Law. Enjoy the year ahead!

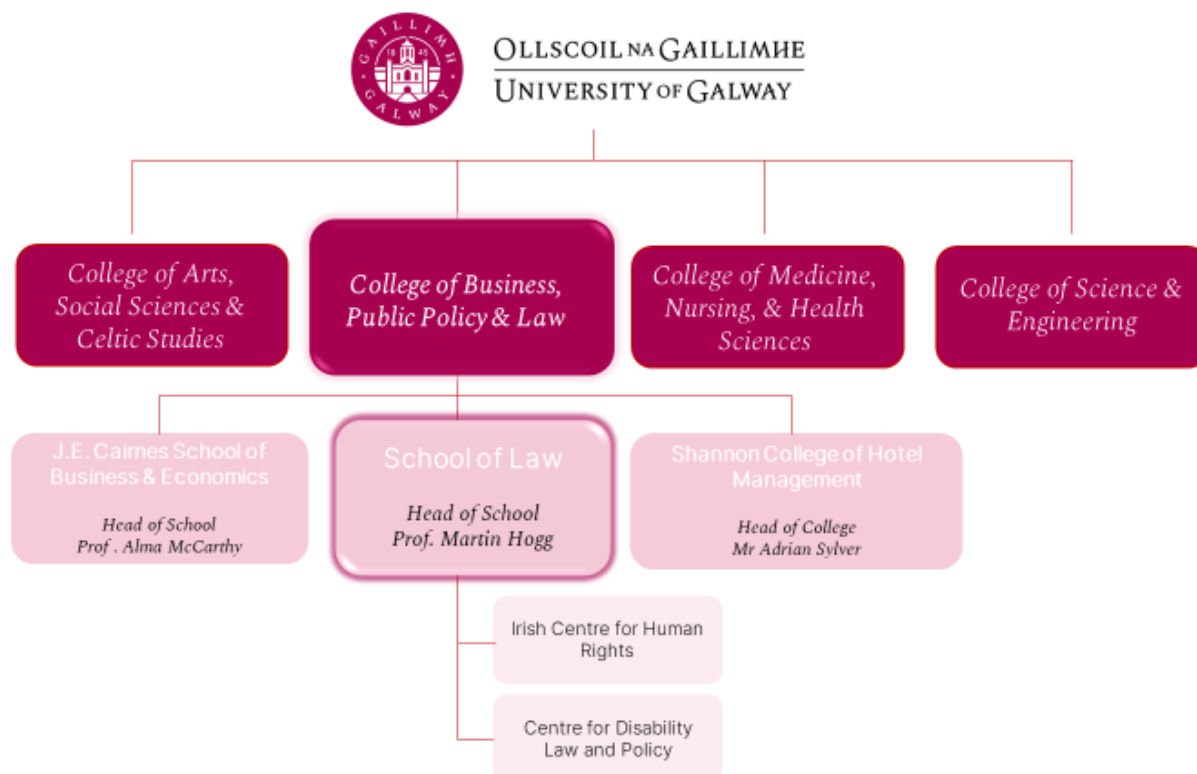
A handwritten signature in black ink, appearing to read 'Martin', with a horizontal line underneath.

---

**Prof Martin Hogg**  
**Head of School**  
**School of Law**

## Ollscoil na Gaillimhe | *University of Galway*

Your university, Ollscoil na Gaillimhe | University of Galway, was established in 1845 as Queen's College Galway. Today, University of Galway is one of Ireland's foremost centres of academic excellence. With over 18,000 students, it has a long-established reputation of teaching and research excellence. University of Galway is situated on a beautiful riverside campus right in the heart of Galway city and by now you will have witnessed for yourself the extent of the recent building and modernisation programme. Academically, University of Galway is structured around Colleges and Schools. As a Law student, you are a member of the College of Business, Public Policy and Law:



### SCHOOL OF LAW

Established in 1849, the School of Law at the University of Galway delivers innovative legal education in a dynamic school dedicated to impactful, high quality legal research.

With 800 undergraduate and postgraduate students and over [40 staff](#), the School emphasises student-focused, research-led teaching delivered in a supportive and intellectually challenging environment.

It hosts the internationally renowned [Irish Centre for Human Rights](#) and the [Centre for Disability Law & Policy](#); both centres with established reputations as world leaders in their fields. The School is passionate about research that meets the highest standards of scholarship, informs student learning and engages with current societal challenges, impacting public debate and informing government policy.

## ERASMUS PROGRAMME CONTACTS

### Programme Director

Dr Edel Hughes – **September 2023**  
[edel.hughes@universityofgalway.ie](mailto:edel.hughes@universityofgalway.ie)

Nicola Murphy – **From October 2023**  
[nicola.murphy@universityofgalway.ie](mailto:nicola.murphy@universityofgalway.ie)

### Director of Internationalisation

Dr Anita Ferrara  
[anita.ferrara@universityofgalway.ie](mailto:anita.ferrara@universityofgalway.ie)

## GENERAL INFORMATION

### IMPORTANCE OF ATTENDANCE

College semesters are short and it is easy to fall behind. Regular attendance and participation in lectures and tutorials is the best way to avoid this and to get the most out of your education. The School of Law aims to support students to succeed in their degrees. Consequently, and in line with the university's attendance policy, the School does engage in some targeted attendance monitoring in lectures and tutorials. The purpose of this is not to be punitive but supportive. We are acutely aware of the difficulties students may face when it comes to attendance (illness, care responsibilities, lack of accommodation etc). If we are aware of these issues, we can put in place supports to address them. Attendance monitoring is one way of doing this.

Related to this, students are advised to note the following extracts from the university's attendance policy (full details here: <https://www.universityofgalway.ie/centre-excellence-learning-teaching/teachinglearning/attendance/>):

*“(1) Enrolment on a full-time programme means a commitment to 40-50 hours of total **student effort** per week throughout all the weeks of each semester.*

- *The scheduled classes (lectures, tutorials, laboratories, etc) are only one component of the total effort that is required in order to succeed.*
- *Assessments and assigned coursework are designed on the basis that students are undertaking the full effort required and are not just based on material covered in scheduled class time alone.*
- *Students should make sure that they timetable in their own diaries adequate time for study, reading, coursework and revision across the semester. Success at university level is not possible through cramming at the last minute.*
- *Such levels of engagement and activity will make it more likely that students will acquire a high level of knowledge and understanding of their chosen subjects, feel confident in their abilities and experience less stress during assessments and be better prepared for subsequent years.*

(2) Enrolment on a university module or programme means a commitment to active participation and engagement, which includes **attendance** at all scheduled classes.

- Attendance is not optional, but an obligatory requirement. Non-attendance may be considered *de facto* withdrawal from a course and students may be unable to proceed to examination or subsequent registration. It is essential that first-year students are made aware of this requirement.
- Many Schools and programmes already register attendance at each class and this should be continued. It is necessary, at the very least, to take attendance at key (or random) stages in the semester which can be reported for each School to Colleges and then to Academic Council.
- Research has shown convincingly that poor attendance results in lower levels of achievement and a higher chance of failure and withdrawal from programmes.
- If students have any concerns regarding the quality of the teaching or learning experience in any of their scheduled classes (or other components of their modules) they should provide feedback using the various channels at their disposal (for example, module questionnaires, Class Reps, Liaison committees) so that any issues may be resolved or considered, as appropriate. Non-attendance is not a means of raising any such issues and may be interpreted, rather, as a reflection of student commitment levels.
- Clearly, there will be extenuating circumstances faced by students from time to time, such as illness and other personal difficulties. Students in these situations should notify the appropriate person responsible for their course (this may need to be clarified in handbooks, websites, etc) so that appropriate measures can be taken.

## Academic Year 2023/2024 - Important Dates

### Academic Year 2023/2024

#### Semester 1

Start of teaching	Monday 4 <sup>th</sup> September
End of teaching	Friday 24 <sup>th</sup> November (12 weeks of teaching)
Study week	Monday 27 <sup>th</sup> November to Friday 1 <sup>st</sup> December
Semester 1 Exams Start	Monday 4 <sup>th</sup> December
Semester 1 Exams End	Friday 15 <sup>th</sup> December (10 days exam)
Christmas Holiday	Saturday 16 <sup>th</sup> December

#### Semester 2

Start of teaching	Monday 8 <sup>th</sup> January
End of Teaching	Thursday 28 <sup>th</sup> March (12 weeks of teaching)
Easter	Good Friday 29 <sup>th</sup> March to Easter Monday 1 <sup>st</sup> April
Field Trips	Tuesday 2 <sup>nd</sup> April to Friday 5 <sup>th</sup> April
Study Week	Monday 8 <sup>th</sup> April to Friday 12 <sup>th</sup> April
Semester 2 Exams Start	Monday 15 <sup>th</sup> April
Semester 2 Exams End	Wednesday 1 <sup>st</sup> May (13 days of exams)
Autumn Repeat Exams	Tuesday 6 <sup>th</sup> August to Friday 16 <sup>th</sup> August (9 days of exams)

**Bank Holidays: Monday 30<sup>th</sup> October 2023 / Monday 5<sup>th</sup> February 2024 / Monday 18<sup>th</sup> March 2024 / Monday 6<sup>th</sup> May 2024 / Monday 3<sup>rd</sup> June 2024 / Monday 5<sup>th</sup> August 2024**

## SCHOOL SUPPORT

The School Administration Office is your first point of contact for general queries relating to programmes, modules, examinations, etc and staff are available for contact from 9.30am – 4.30pm, Monday – Friday throughout the academic year, unless otherwise indicated. Queries should be raised in the first instance by emailing [law@universityofgalway.ie](mailto:law@universityofgalway.ie). For urgent queries, call 091 492389 or 091 493082.

The School of Law administration offices are located on Floor 2, Tower 2, Arts/Science Building. Please contact the Office by email to arrange an in-person appointment.

If you are seeking support and guidance for personal or academic concerns, [the School of Law Student Advisor](#), AnnMarie Gilchrist, is available to all Law students in need of assistance:

### Student Support Officer - School of Law: AnnMarie Gilchrist

My name is AnnMarie Gilchrist and I am the Student Support Officer for the School of Law in University of Galway.

My role is to support students who may be at personal or academic risk. I offer a confidential, non-judgmental service to students, and can offer advice on time management, structuring study plans, financial assistance, exam preparation, and general welfare.

I also support students who are feeling overwhelmed or experiencing personal difficulty which impacts their academic success. I can offer advice and information on various supports which are available to students of NUI Galway and no problem is too big or too small, so please don't hesitate to contact me.

I work full-time, and you can contact me on [annmarie.gilchrist@universityofgalway.ie](mailto:annmarie.gilchrist@universityofgalway.ie)



### Useful Contacts

<b>School of Law</b> T: +353 (0) 91 492389 <a href="mailto:law@univerit.ie">law@univerit.ie</a>	<b>Career Development Centre</b> T: +353 (0) 91 493589 <a href="mailto:careers@universityofgalway.ie">careers@universityofgalway.ie</a>	<b>Student Registry Helpdesk</b> T: +353 (0) 91 495999 <a href="mailto:askregistry@universityofgalway.ie">askregistry@universityofgalway.ie</a>
<b>Registration Office</b> T: +353 (0) 91 494329 <a href="mailto:reghelp@universityofgalway.ie">reghelp@universityofgalway.ie</a>	<b>Disability Support Service</b> T: +353 (0) 91 492813 <a href="mailto:disabilityservice@universityofgalway.ie">disabilityservice@universityofgalway.ie</a>	<b>Fees Office</b> T: +353 (0) 91 492386 <a href="mailto:fees@universityofgalway.ie">fees@universityofgalway.ie</a>
<b>Chaplaincy Centre</b> T: +353 (0) 091 495055 <a href="mailto:chaplains@universityofgalway.ie">chaplains@universityofgalway.ie</a>	<b>Student Counselling Service</b> T: +353 (0) 91 492484 <a href="mailto:counselling@universityofgalway.ie">counselling@universityofgalway.ie</a>	

## FREQUENTLY ASKED QUESTIONS

When contacting with a question or concern, **please do not address your query to multiple members of School of Law staff unless directed to**. When submitting a query, please include your student ID number and course instance within your message.

### Who should I contact if.....

- **...I have a registration query?**

If you have a registration query during the open registration period at the start of each semester. Please contact Registration in the first instance:

[registration@universityofgalway.ie](mailto:registration@universityofgalway.ie). Outside of these periods, it is best to contact the School Office: [law@universityofgalway.ie](mailto:law@universityofgalway.ie)

- **...I have a timetable query?**

Timetables for Law programmes are available here. <https://www.universityofgalway.ie/business-public-policy-law/school-of-law/students/timetables/>

Semester timetable queries should be directed to the School Office:

[law@universityofgalway.ie](mailto:law@universityofgalway.ie)

Exam timetables are released by the Examinations Office in the weeks prior to the relevant exam period. Issues with exam timetables should be directed to

[askregistry@universityofgalway.ie](mailto:askregistry@universityofgalway.ie)

- **...I have a specific academic query?**

- Contact your relevant module leader if your query relates to a particular module.
- Contact your programme director if the query relates to the wider programme.
- Contact the School Office for general academic queries or in the event that the relevant academic staff member is not available.

- **... I have a query about module assessments?**

It is best to contact the relevant module leader in the first instance.

- **...I am experiencing issues accessing my UG student CASS account?**

The Information Solutions and Services (ISS) unit is the primary contact for any issues regarding your University of Galway Campus Account and related applications. If you have any issue, you can contact the Library & IT Service desk for assistance. For advice and support contact the ISS Service Desk on 091 495777 or the [Library & I.T. Service Desk](#) on 091 495399.

- **...I am experiencing personal/financial/ academic difficulties?**

Please contact School of Law Student Support Officer, AnnMarie Gilchrist:

[annmarie.gilchrist@universityofgalway.ie](mailto:annmarie.gilchrist@universityofgalway.ie) and/or the School Office:

[law@universityofgalway.ie](mailto:law@universityofgalway.ie) in the first instance for guidance on the supports available.

- **...I have a query about Winter/Summer/ Autumn examinations and procedures?**

If you have a query regarding examination procedure, particularly regarding deferral of assessment, you must contact the School of Law Office: [law@universityofgalway.ie](mailto:law@universityofgalway.ie)



- **...I am not sure who to contact about my query?**

Please contact the School Office at [law@universityofgalway.ie](mailto:law@universityofgalway.ie), in the first instance, so that your query can appropriately addressed by and directed to relevant staff members.

## LIBRARY



[library@universityofgalway.ie](mailto:library@universityofgalway.ie)



<http://www.library.universityofgalway.ie>

Effective use of the library is a crucially important part of legal education. Students should take advantage of every opportunity to familiarise themselves with the library and the services it offers. Nowadays, many excellent services are available through electronic sources (located on the ground floor of the library). Training sessions are available and details may be found at the information desk located in the library.

[Introduction - Law - LibGuides at National University of Ireland Galway \(nuigalway.ie\)](#)

## EXAM REGULATIONS

Students must present for the first sitting of their examinations. Repeat examinations are confined to those who fail at the first attempt. Repeat Examinations will be held in the Autumn Examination session, typically in the month of August.

For academic year 2023/2024 examinations for Semester One will be held from 4th to 15th December 2023. Further information on the examination process will be provided in due course. Marks are awarded out of 100% and the pass mark is 40%.

## STANDARDS

40% or above	Third Class Honours
50% or above	Second Class Honours, Grade 2
60% or above	Second Class Honours, Grade 1
70% or above	First Class Honours

## SCHEDULE OF MODULES FOR VISITING STUDENTS

### SEMESTER 1

<u>Code</u>	<u>Module Name</u>	<u>ECTS</u>	<u>Assessment</u>
LW4103	Administrative Law I	5	Two hour exam
LW3104	Applied Legal Theory	5	Continuous Assessment
LW215	Commercial Law	5	Continuous Assessment
LW229	Company Law I	5	Two hour exam
LW333	Comparative Competition Law	5	Two hour exam
LW228	Constitutional Law II	5	Two hour exam
LW202	Contract Law I	5	Two hour exam
LW409	Criminal Law I	5	Two hour exam
LW357	Environmental Law I	5	Continuous Assessment
LW263	Equity I	5	Two hour exam
LW3151	Equality and Law	5	Continuous Assessment
LW503	European Union Law I	5	Two hour exam
LW3130	European Human Rights Law - Systems & Themes I	5	Two hour exam
LW513	Evidence I	5	Two hour exam
LW383	Information Technology Law	5	Two hour exam
LW3127	International Protection of Human Rights I	5	Two hour exam
LW103.I	Irish Legal System <i>(Starting week beginning 18<sup>th</sup> September)</i>	5	Two hour exam
LW212	Labour Law I	5	Two hour exam
LW225	Land Law I	5	Two hour exam

### SEMESTER 2

<u>Code</u>	<u>Module Name</u>	<u>ECTS</u>	<u>Assessment</u>
LW4104	Administrative Law II	5	Two hour exam
LW371	Alternative Dispute Resolution	5	Two hour exam
LW3158	Animal Law	5	Continuous Assessment
LW231	Company Law II	5	Two hour exam
LW370	Comparative Disability Law	5	Two hour exam
LW227	Constitutional Law I	5	Two hour exam
LW205	Contract Law II	5	Two hour exam
LW413	Criminal Law II	5	Two hour exam
LW365	Criminology	5	Continuous Assessment
LW232	Housing Law & Policy	5	Two hour exam
LW358	Environmental Law II	5	Continuous Assessment
LW265	Equity II	5	Two hour exam
LW504	European Union Law II	5	Two hour exam
LW514	Evidence II	5	Two hour exam
LW419	Health and Safety Law	5	Two hour exam
LW356	Industrial and Intellectual Property Law	5	Two hour exam

LW364	International Trade Law	5	Two hour exam
LW3119	Jurisprudence	5	Two hour exam
LW216	Labour Law II	5	Two hour exam
LW226	Land Law II	5	Two hour exam
*LW3128	International Protection of Human Rights I <i>*(Module can only be taken by students who have taken Part I)</i>	5	Two hour exam
*LW3131	European Human Rights Law - Systems & Themes II <i>*(Module can only be taken by students who have taken Part I)</i>	5	Two hour exam
LW3152	Law and Analytics	5	Continuous Assessment
LW3153	The Protection of Prisoner Rights under International Law	5	Continuous Assessment

## YEAR-LONG

<u>Code</u>	<u>Module Name</u>	<u>ECTS</u>	<u>Examination</u>
*LW3150	Family and Child Law	10	Two hour exam
*LW3109	Tort	10	Two hour exam
*LW323	Public International Law	10	Two hour exam