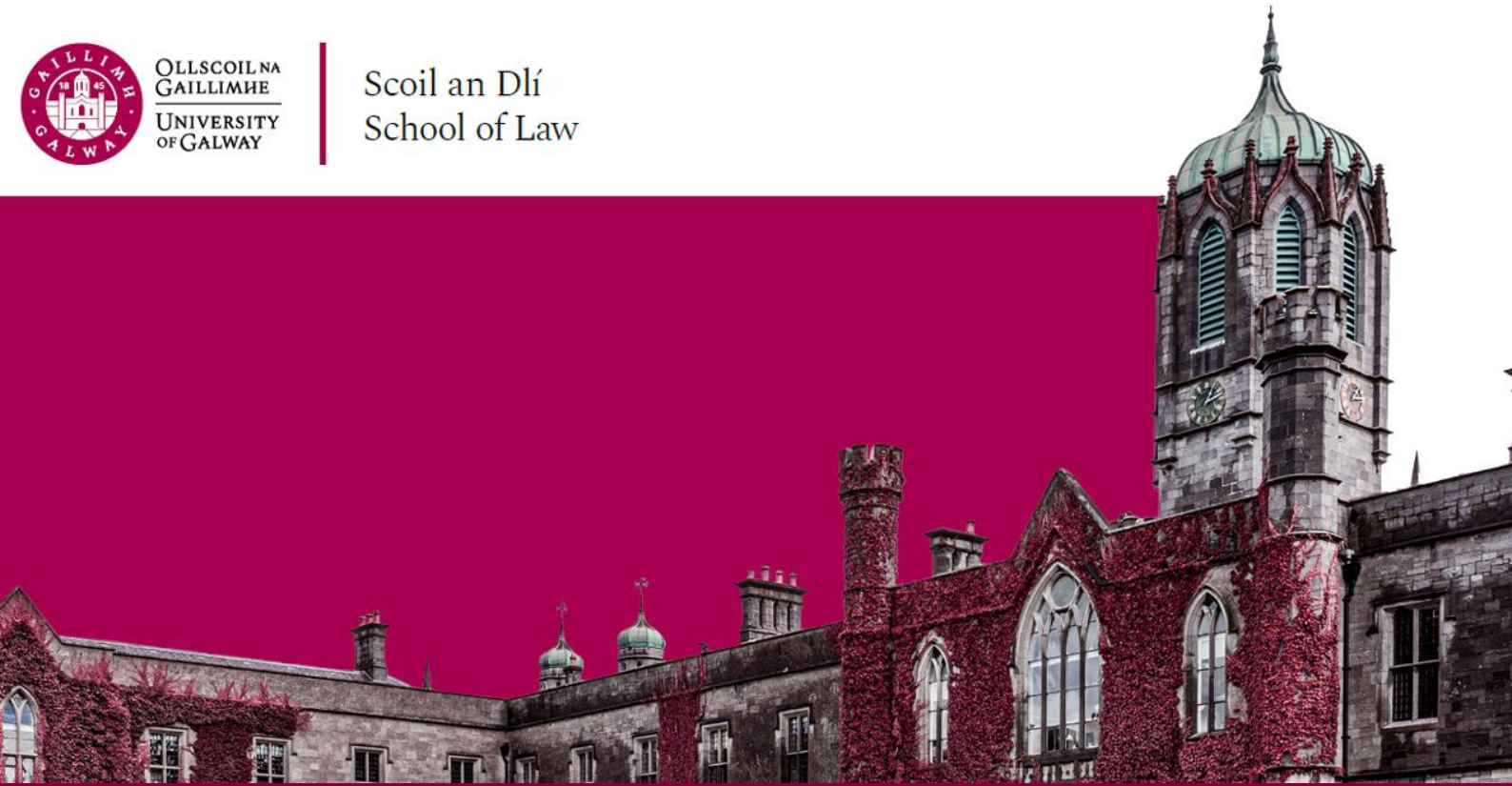




OLLSCOIL NA  
GAILLIMHĒ  
UNIVERSITY  
OF GALWAY

Scoil an Dlí  
School of Law



# FINAL BACHELOR OF LAW *and* BUSINESS (4BLB1)

Everything you need to know for the year ahead.

Scoil *an* Dlí

Leabhrán Acadúil

2023 -2024

School *of* Law

Academic Booklet

2023 - 2024



---

Please note that the information contained in this document is subject to change.

# Fáiltiú | *Welcome*

September 2023

Dear Student,



We are pleased to welcome you back to the School of Law at the University of Galway for academic year 2023-24. Since 1849, our School of Law has been delivering innovative legal education in a dynamic school dedicated to impactful, high quality legal research. We have over 800 undergraduate and postgraduate students, over 40 academic staff, a range of undergraduate and postgraduate programmes, and exciting clinical legal education opportunities.

We emphasise student-focused, research-led teaching delivered in a supportive and intellectually challenging environment. We hope that all of this will combine to make your studies with us this year exciting and challenging.

The School is passionate about research that meets the highest standards of scholarship, informs your learning, and engages with current societal challenges, impacting public debate and informing government policy. Our contribution to public policy has never been more important. Equally, the contributions that you will make as you embark upon your professional life have the potential for significant impact.

These are exciting times to be studying law, both within the classroom and in the co-curricular activities you will be undertaking. The graduate attributes you acquire throughout your degree and your flexibility in adapting to new learning environments will combine to ensure that you develop a wide range of knowledge, skills, and dispositions that will serve you well as you prepare for your career.

My colleagues and I look forward to working with you over the course of the academic year and wish you well with your studies. As ever, please let us know how you are finding your studies and if there are any ways you think we could improve the educational environment at the School of Law. Enjoy the year ahead!

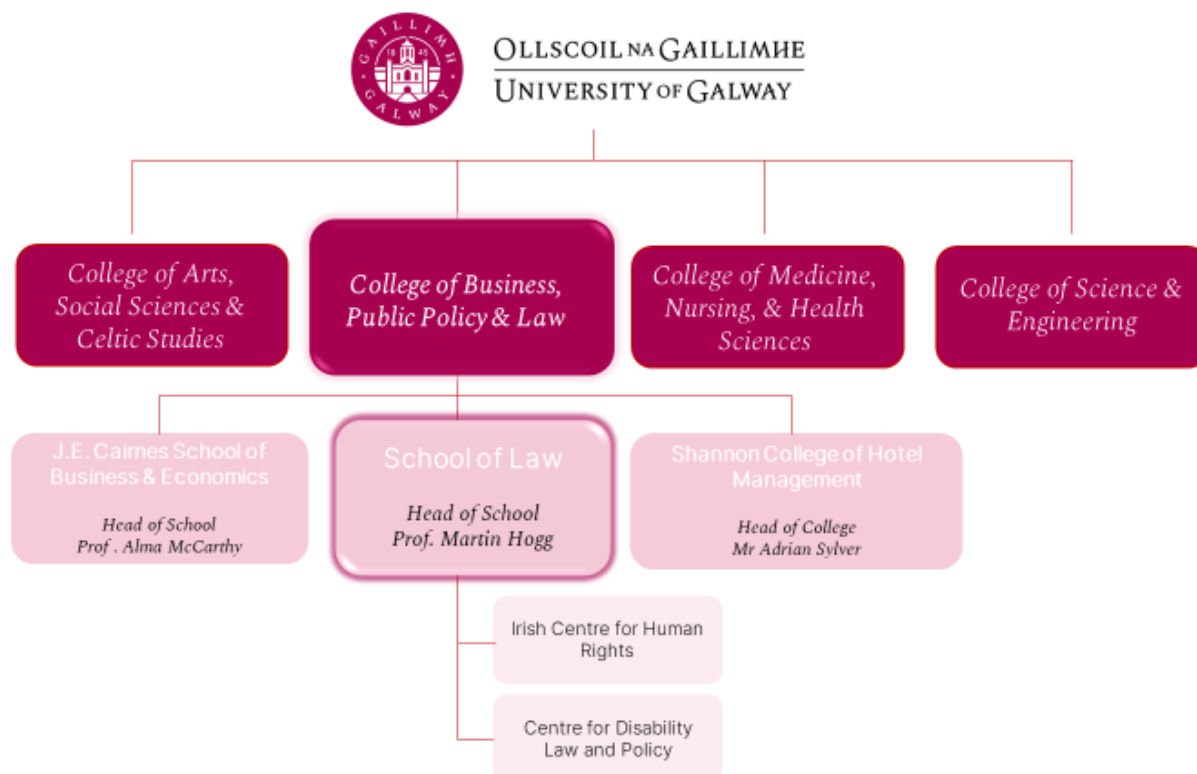
A handwritten signature in black ink, appearing to read 'Martin Hogg', with a horizontal line underneath.

---

**Prof Martin Hogg**  
**Head of School**  
**School of Law**

## Ollscoil na Gaillimhe | *University of Galway*

Your university, Ollscoil na Gaillimhe | University of Galway, was established in 1845 as Queen's College Galway. Today, University of Galway is one of Ireland's foremost centres of academic excellence. With over 18,000 students, it has a long-established reputation of teaching and research excellence. University of Galway is situated on a beautiful riverside campus right in the heart of Galway city and by now you will have witnessed for yourself the extent of the recent building and modernisation programme. Academically, University of Galway is structured around Colleges and Schools. As a Law student, you are a member of the College of Business, Public Policy and Law:



### SCHOOL OF LAW

Established in 1849, the School of Law at the University of Galway delivers innovative legal education in a dynamic school dedicated to impactful, high quality legal research.

With 800 undergraduate and postgraduate students and over [40 staff](#), the School emphasises student-focused, research-led teaching delivered in a supportive and intellectually challenging environment.

It hosts the internationally renowned [Irish Centre for Human Rights](#) and the [Centre for Disability Law & Policy](#); both centres with established reputations as world leaders in their fields. The School is passionate about research that meets the highest standards of scholarship, informs student learning and engages with current societal challenges, impacting public debate and informing government policy.

## 4BLB1 PROGRAMME CONTACTS

### Programme Director & Class Advisor

Ms Deirdre Callanan

[deirdre.callanan@universityofgalway.ie](mailto:deirdre.callanan@universityofgalway.ie)

## GENERAL INFORMATION

### IMPORTANCE OF ATTENDANCE

College semesters are short and it is easy to fall behind. Regular attendance and participation in lectures and tutorials is the best way to avoid this and to get the most out of your education. The School of Law aims to support students to succeed in their degrees. Consequently, and in line with the university's attendance policy, the School does engage in some targeted attendance monitoring in lectures and tutorials. The purpose of this is not to be punitive but supportive. We are acutely aware of the difficulties students may face when it comes to attendance (illness, care responsibilities, lack of accommodation etc). If we are aware of these issues, we can put in place supports to address them. Attendance monitoring is one way of doing this.

Related to this, students are advised to note the following extracts from the university's attendance policy (full details here: <https://www.universityofgalway.ie/centre-excellence-learning-teaching/teachinglearning/attendance/>):

*“(1) Enrolment on a full-time programme means a commitment to 40-50 hours of total **student effort** per week throughout all the weeks of each semester.*

- *The scheduled classes (lectures, tutorials, laboratories, etc) are only one component of the total effort that is required in order to succeed.*
- *Assessments and assigned coursework are designed on the basis that students are undertaking the full effort required and are not just based on material covered in scheduled class time alone.*
- *Students should make sure that they timetable in their own diaries adequate time for study, reading, coursework and revision across the semester. Success at university level is not possible through cramming at the last minute.*
- *Such levels of engagement and activity will make it more likely that students will acquire a high level of knowledge and understanding of their chosen subjects, feel confident in their abilities and experience less stress during assessments and be better prepared for subsequent years.*

(2) Enrolment on a university module or programme means a commitment to active participation and engagement, which includes **attendance** at all scheduled classes.

- Attendance is not optional, but an obligatory requirement. Non-attendance may be considered *de facto* withdrawal from a course and students may be unable to proceed to examination or subsequent registration. It is essential that first-year students are made aware of this requirement.
- The student grant (Student Universal Support, Ireland) scheme requires that attendance is monitored and reported on.
- Similarly, fees are paid by the State on behalf of students on the implicit understanding that the students are fully participating in the programmes for which they are registered.
- Many Schools and programmes already register attendance at each class and this should be continued. It is necessary, at the very least, to take attendance at key (or random) stages in the semester which can be reported for each School to Colleges and then to Academic Council.
- Research has shown convincingly that poor attendance results in lower levels of achievement and a higher chance of failure and withdrawal from programmes.
- If students have any concerns regarding the quality of the teaching or learning experience in any of their scheduled classes (or other components of their modules) they should provide feedback using the various channels at their disposal (for example, module questionnaires, Class Reps, Liaison committees) so that any issues may be resolved or considered, as appropriate. Non-attendance is not a means of raising any such issues and may be interpreted, rather, as a reflection of student commitment levels.
- Clearly, there will be extenuating circumstances faced by students from time to time, such as illness and other personal difficulties. Students in these situations should notify the appropriate person responsible for their course (this may need to be clarified in handbooks, websites, etc) so that appropriate measures can be taken.

## Academic Year 2023/2024 - Important Dates

### Academic Year 2023/2024

#### Semester 1

Start of teaching	Monday 4 <sup>th</sup> September
End of teaching	Friday 24 <sup>th</sup> November (12 weeks of teaching)
Study week	Monday 27 <sup>th</sup> November to Friday 1 <sup>st</sup> December
Semester 1 Exams Start	Monday 4 <sup>th</sup> December
Semester 1 Exams End	Friday 15 <sup>th</sup> December (10 days exam)
Christmas Holiday	Saturday 16 <sup>th</sup> December

#### Semester 2

Start of teaching	Monday 8 <sup>th</sup> January
End of Teaching	Thursday 28 <sup>th</sup> March (12 weeks of teaching)
Easter	Good Friday 29 <sup>th</sup> March to Easter Monday 1 <sup>st</sup> April
Field Trips	Tuesday 2 <sup>nd</sup> April to Friday 5 <sup>th</sup> April
Study Week	Monday 8 <sup>th</sup> April to Friday 12 <sup>th</sup> April
Semester 2 Exams Start	Monday 15 <sup>th</sup> April
Semester 2 Exams End	Wednesday 1 <sup>st</sup> May (13 days of exams)
Autumn Repeat Exams	Tuesday 6 <sup>th</sup> August to Friday 16 <sup>th</sup> August (9 days of exams)

**Bank Holidays: Monday 30<sup>th</sup> October 2023 / Monday 5<sup>th</sup> February 2024 / Monday 18<sup>th</sup> March 2024 / Monday 6<sup>th</sup> May 2024 / Monday 3<sup>rd</sup> June 2024 / Monday 5<sup>th</sup> August 2024**

## SCHOOL SUPPORT

The School Administration Office is your first point of contact for general queries relating to programmes, modules, examinations, etc and staff are available for contact from 9.30am – 4.30pm, Monday – Friday throughout the academic year, unless otherwise indicated. Queries should be raised in the first instance by emailing [law@universityofgalway.ie](mailto:law@universityofgalway.ie). For urgent queries, call 091 492389 or 091 493082.

The School of Law administration offices are located on Floor 2, Tower 2, Arts/Science Building. Please contact the Office by email to arrange an in-person appointment.

If you are seeking support and guidance for personal or academic concerns, [School of Law Student Support Officer](#), AnnMarie Gilchrist, is available to all Law students in need of assistance:

### Student Support Officer - School of Law: AnnMarie Gilchrist

My name is AnnMarie Gilchrist and I am the Student Support Officer for the School of Law in University of Galway.

My role is to support students who may be at personal or academic risk. I offer a confidential, non-judgmental service to students, and can offer advice on time management, structuring study plans, financial assistance, exam preparation, and general welfare.

I also support students who are feeling overwhelmed or experiencing personal difficulty which impacts their academic success. I can offer advice and information on various supports which are available to students of University of Galway and no problem is too big or too small, so please don't hesitate to contact me.

I work full-time, and you can contact me on [annmarie.gilchrist@universityofgalway.ie](mailto:annmarie.gilchrist@universityofgalway.ie)



### Useful Contacts

<b>School of Law</b> T: +353 (0) 91 492389 <a href="mailto:law@univerit.ie">law@univerit.ie</a>	<b>Career Development Centre</b> T: +353 (0) 91 493589 <a href="mailto:careers@universityofgalway.ie">careers@universityofgalway.ie</a>	<b>Student Registry Helpdesk</b> T: +353 (0) 91 495999 <a href="mailto:askregistry@universityofgalway.ie">askregistry@universityofgalway.ie</a>
<b>Registration Office</b> T: +353 (0) 91 494329 <a href="mailto:reghelp@universityofgalway.ie">reghelp@universityofgalway.ie</a>	<b>Disability Support Service</b> T: +353 (0) 91 492813 <a href="mailto:disabilityservice@universityofgalway.ie">disabilityservice@universityofgalway.ie</a>	<b>Fees Office</b> T: +353 (0) 91 492386 <a href="mailto:fees@universityofgalway.ie">fees@universityofgalway.ie</a>
<b>Chaplaincy Centre</b> T: +353 (0) 091 495055 <a href="mailto:chaplains@universityofgalway.ie">chaplains@universityofgalway.ie</a>	<b>Student Counselling Service</b> T: +353 (0) 91 492484 <a href="mailto:counselling@universityofgalway.ie">counselling@universityofgalway.ie</a>	

## FREQUENTLY ASKED QUESTIONS

When contacting with a question or concern, **please do not address your query to multiple members of School of Law staff unless directed to**. When submitting a query, please include your student ID number and course instance within your message.

### Who should I contact if.....

- **...I have a registration query?**

If you have a registration query during the open registration period at the start of each semester.. Please contact Registration in the first instance: [registration@universityofgalway.ie](mailto:registration@universityofgalway.ie) . Outside of these periods, it is best to contact the School Office: [law@universityofgalway.ie](mailto:law@universityofgalway.ie)

- **...I have a timetable query?**

Timetables for Law programmes are available here <https://www.universityofgalway.ie/business-public-policy-law/school-of-law/students/timetables/>

Semester timetable queries should be directed to the School Office:

[law@universityofgalway.ie](mailto:law@universityofgalway.ie)

Exam timetables are released by the Examinations Office in the weeks prior to the relevant exam period. Issues with exam timetables should be directed to

[askregistry@universityofgalway.ie](mailto:askregistry@universityofgalway.ie)

- **...I have a specific academic query?**

- Contact your relevant module leader if your query relates to a particular module.
- Contact your programme director if the query relates to the wider programme.
- Contact the School Office for general academic queries or in the event that the relevant academic staff member is not available.

- **...I have a query about fees?**

All queries regarding fee payment should be directed to the Fees Office:

[fees@universityofgalway.ie](mailto:fees@universityofgalway.ie)

**Details on fee payment processes and deadlines are available [here](#).**

- **... I have a query about module assessments?**

It is best to contact the relevant module leader in the first instance.

- **...I am experiencing issues accessing my UG student CASS account?**

The Information Solutions and Services (ISS) unit is the primary contact for any issues regarding your University of Galway Campus Account and related applications. If you have any issue, you can contact the Library & IT Service desk for assistance. For advice and support contact the ISS Service Desk on 091 495777 or the [Library & I.T. Service Desk](#) on 091 495399.

- **...I am experiencing personal/financial/ academic difficulties?**

Please contact School of Law Student Support Officer, AnnMarie Gilchrist:

[annmarie.gilchrist@universityofgalway.ie](mailto:annmarie.gilchrist@universityofgalway.ie) and/or the School Office:

[law@universityofgalway.ie](mailto:law@universityofgalway.ie) in the first instance for guidance on the supports available.

- **...I am considering a Leave of Absence from my studies?**



Leave of Absence is an authorised and temporary break away from your programme. You can apply for Leave of Absence for numerous reasons, including medical or financial.

Should you be considering applying for Leave of Absence, please contact your College/School Office and Programme Director. The [Leave of Absence Policy](#) contains all relevant information, please read it carefully. Also take a look at [the Leave of Absence workflow diagram](#), it steps you through the process involved.

- **...I have a query about Winter/Summer/ Autumn examinations and procedures?**  
If you have a query regarding examination procedure, particularly regarding deferral of assessment, you must contact the School of Law Office: [law@universityofgalway.ie](mailto:law@universityofgalway.ie)
- **...I require a letter confirming my registration or attendance at university?**  
The Student Registry Helpdesk provide registration statements on request. Please contact [askregistry@universityofgalway.ie](mailto:askregistry@universityofgalway.ie) in the first instance.
- **...I require a transcript of my academic results from previous exam sessions?**  
The Student Registry Helpdesk provide transcripts by online request form: <https://www.universityofgalway.ie/student-registry-helpdesk/our-services/transcripts/>
- **...I require my current class ranking?**  
Please contact the School of Law Office, at [law@universityofgalway.ie](mailto:law@universityofgalway.ie)
- **...I am not sure who to contact about my query?**  
Please contact the School Office at [law@universityofgalway.ie](mailto:law@universityofgalway.ie), in the first instance, so that your query can appropriately addressed by and directed to relevant staff members.

## LIBRARY



[library@universityofgalway.ie](mailto:library@universityofgalway.ie)



<http://www.library.universityofgalway.ie>

Effective use of the library is a crucially important part of legal education. Students should take advantage of every opportunity to familiarise themselves with the library and the services it offers. Nowadays, many excellent services are available through electronic sources (located on the ground floor of the library). Training sessions are available and details may be found at the information desk located in the library.

<https://libguides.library.universityofgalway.ie/friendly.php?s=law>

## CAREERS IN LAW

The Careers Development Centre, in collaboration with the School of Law and the University of Galway Law Society is delighted to announce details of the 'Careers in Law Events 2023'.

The highlight of the week is the Law Fair which takes place in Bailey Allen Hall **on Tuesday 10<sup>th</sup> of October**. The Law Fair gives students an opportunity to network with representatives from Ireland's major law firms and other organisations and to explore exciting career opportunities both in and beyond the legal profession.

Some of the employers and organisations already confirmed to attend the Law Fair on Tuesday 10<sup>th</sup> of October include **A&L Goodbody, Arthur Cox, Cúirt Bhreithiúnais an Aontais Eorpaigh, Dechert, Eversheds Sutherland, Flynn O'Driscoll Business Lawyers, Galway Solicitor's Bar Association (representing Galway Law firms), Kennedys - Dublin, KPMG, Legal Aid Board, Maples Group, the Law Society, LK Shields, McCann FitzGerald LLP, Philip Lee, RDJ LLP, Walkers**

Further firms are to be announced with **BDO, Deloitte, EY (Ireland), Holmes Law LLP, Matheson, Pinsent Masons LLP, PwC, and William Fry** having attended in 2022.

During the fair, several employers will deliver presentations, and give advice and tips for CVs, application forms and Interviews. If you are planning to apply **for graduate programmes, professional work placement or summer internships**, these events are not to be missed!

Watch out for more details about the Law Careers Fair and other events planned during the academic year. Presentations on Qualifying as a Solicitor or Barrister, alumni panel events on Alternative Careers for Law Students and presentations from Galway Solicitors Bar Association will take place throughout the academic year. The fair, seminars and employer presentations will give you insights into what it is like to work in a variety of sectors and careers. Students will find full details on [Careers Connect](#) over the coming weeks and will receive emails and notifications through the Career Development Centre and Law School.

### **Career Tips**

The team at the Career Development Centre are here to support law students throughout their studies. For students in their final year, this is a very important year for you from a career perspective. You do need to get a good degree and you also need to start career planning. If you are confused about your career options or unsure of what might suit you, be sure to use the resources available to you on the [Careers Sharepoint](#) including our dedicated [page for Law Students on the Careers Sharepoint](#).

You are encouraged to attend the event **Your Degree in Law – What Next**, which will take place on **Tuesday 12<sup>th</sup> September at 6pm**. At this event, your Career Adviser, Aisling Conroy will share information and advice as you plan the next step after your degree. Whether you are uncertain about what you want to do next, or have a career plan and need some information, this event is a good starting point. Register on [Careers Connect](#)

You can send a query or request an appointment with a Career Development Adviser in the Career Development Centre during the year through [Careers Connect](#)

## **FURTHER EDUCATION**

## Professional Legal Qualification

Students who intend to seek entry to the Law Professions must inform themselves of the current requirements of the professional bodies, which are subject to change. At the time of print, the table below outlines the modules in which students are required to sit entrance examinations for the professional legal bodies:

<b>Law Society of Ireland (Solicitor)</b>	<b>The Honorable Society of King's Inns (Barrister)</b>
Contract Law I & II	Contract Law I & II
Constitutional Law I & II	Constitutional Law I & II
Tort Law I & II	Tort Law I & II
Criminal Law I & II	Criminal Law I & II
EU Law I & II	EU Law I & II
Equity Law I & II	Equity Law I & II
Company Law I & II	Company Law I & II
Land Law I & II	Land Law I & II
	Evidence I & II
	Administrative Law I
	Jurisprudence

## POSTGRADUATE TAUGHT AND RESEARCH PROGRAMMES AT UNIVERSITY OF GALWAY

The School of Law offers a number of full-time and part-time post graduate programmes as follows:

- International and Comparative Business Law (LLM)
- International and Comparative Disability Law and Policy (LLM)
- International Criminal Law (LLM)
- International Human Rights (LLM)
- International Migration and Refugee Law and Policy (LLM)
- General (LLM)
- Peace Operations, Humanitarian Law and Conflict (LLM)
- Disability Law & Policy (PhD)
- Human Rights (PhD)
- Law (PhD, LLM)
- Structured PhD (Law)

Full details of programme content and entry requirements can be found online:

[Postgraduate Taught programmes - University of Galway](#)

[Postgraduate Research programmes - University of Galway](#)

## EXAM REGULATIONS

Full details of University Marks and Standards can be found on the University of Galway Examinations website. *Please note that revisions to the Marks and Standards may occur during the year. The most up-to-date revisions can be found on:* [Student Policies and Procedures - University of Galway](#)

## ACADEMIC YEAR & ECTS

- The academic year is divided into two periods, called semesters, which are of approximately 12 weeks each. Programmes are organised into modules and carry a credit unit weighting (European Credit Transfer System), or value, which reflect extent and difficulty of the module concerned.
- Students must accumulate a minimum total of 60 ECTS per academic year and pass each year of their programme. The 60 ECTS must include the core obligatory modules specified for each year. It is not possible to present for modules which have been taken in previous years.
- A student will be given credit for modules passed and will not have to represent for examination in any module in which a minimum mark of 40% has been returned within the time limit set out in regulations for the successful completion of the particular semester.
- The normal time limit for carrying forward of marks to subsequent examination sessions is two academic years.

## EXAMINATION & COMPENSATION

- Following registration, students of the degree shall be required to pass examinations in each of the academic years of the programme, from first to final, in succession before proceeding to the following year.
- At least eight semesters or four academic years must elapse between passing the First Year Examination and Graduation.
- First Year Examinations must be passed within two academic years from the date of entering the programme.
- **Exception:** A student, who is permitted to transfer to the first year of the alternative programme, having failed in another school, must pass the First Year Examination within three semesters or one academic year of entering the programme.
- Students must present for the first sitting of their examinations unless they have received permission to defer an examination.
- A student will normally be examined at the end of the semester in the module they have completed. Some modules extend over two semesters and may be examined at the end of the second semester only. Some modules may be examined entirely by continuous assessment, the details of which will be communicated by the lecturer.
- Marks of 40% and above are carried forward to the next session and once a grade is achieved, modules are not repeatable.

- Compensation will only be applied in cases where its application enables the student to pass the University Examinations as a whole. The pass standard for a module is 40%. However, a student with marks of less than 40% in one or more modules will be deemed to have passed the academic year provided:

- The aggregate mark for all modules of the year is at least 40%
- The mark in every module is 35% or more
- Not more than 15 ECTS have marks in range 35 – 39%

**Note:** Where one or more of these conditions have not been met each module where the mark is below 40% must be repeated.

## REPEAT EXAMINATION & CAPPING

- Repeat Examinations in the modules of the first and second semesters will be held in the Autumn Examination Session, typically August.
- The maximum mark which may be awarded for an Autumn Repeat Examination of a module at undergraduate level will be the pass mark for the module, viz. 40%.
- Capping will be applied to the Autumn Examination Session of the undergraduate programmes as follows:

- Capping will **not** apply in the first year of undergraduate programmes.
- Capping will apply to all other years of undergraduate programmes from second year through to final year.
- Capping will apply in all cases unless a Deferral has been granted.

## EXAMINATION DEFERRAL

- Autumn examinations are confined to those who fail at the first attempt or who have permission to defer.
- Deferrals are only permitted at the discretion of the Head of School on bona fide grounds of ill-health, bereavement of close family members, or serious personal circumstances which can be verified independently.
- Requests for exam deferral must be made on a special [online Deferral Application Form](#). Students can request this form by emailing the School of Law office at [law@universityofgalway.ie](mailto:law@universityofgalway.ie). **Students must provide documentary letters, medical certificates or other support material from medical doctors, student counsellors or others along with their application. The School reserves the right to verify the stated grounds for deferral.**
- Only the modules listed on the form will be considered for deferral and students should contact [law@universityofgalway.ie](mailto:law@universityofgalway.ie) to be informed of the outcome of their application.

## DEGREE AWARDS

- Honours degree is awarded following the successful passing of the Fourth Year Examinations.
- Honours in the second year of the undergraduate programme will be calculated according to the following table:

- H1 70% on the aggregate
- H2.1 60% on the aggregate
- H2.2 50% on the aggregate

- Honours in final year of the undergraduate programme will be calculated on the basis of 30% of the aggregate mark obtained in **second** year of the programme and 70% of the aggregate mark obtained in **final** year of the programme according to the following table:

- H1 70% on the aggregate
- H2.1 60% on the aggregate
- H2.2 50% on the aggregate
- H3 40% on the aggregate

## MODULE SELECTION

One of the main differences for your final year is that modules are now grouped into specialist streams. These streams correspond to thematic areas of study and allow you to specialise in a particular topic or area.

When selecting your modules, please note:

- You must study 30ECTS of Core modules and complete 30ECTS of modules from your chosen stream.
- You can only select **one stream** in your final year. We advise you to select a balance of modules spread across both semesters.
- There may be timetable clashes between modules. While we endeavour to ensure that modules do not clash, there are occasions where modules are scheduled at the same time. **You should not select more than two modules that clash on the timetable.**
- Students are not permitted to retake subjects/modules which have been previously passed.
- Students that have passed AY208 Business Finance I in previous academic years cannot choose this module again.

### 4BLB1 – Final Year

**Students must pass modules to a total of 60 ECTS credits.**

The 60 ECTS credits must be selected in the following way:

(a) **30 ECTS obligatory** for all students:

Code	Description	Semester	ECT
LW263	Equity I	Semester 1	5
LW265	Equity II	Semester 2	5
LW225	Land Law I	Semester 1	5
LW226	Land Law II	Semester 2	5
LW215	Commercial Law	Semester 1	5
LW3129	Guided Research Essay	Semester 1 & 2	5

(b) Students must select **one** of the streams listed below and pass modules to a total of 30 ECTS in that stream:

Accounting  
Economics  
Digital Business and Analytics  
Language  
Law General  
Law and Innovation  
Legal Professions  
Management

## Accounting

AY325	International Financial Reporting II	S1	5	Stream Requirement
AY321	Management Accounting II	S1	5	Stream Requirement
AY322	Management Accounting III	S2	5	Stream Requirement
AY326	International Financial Reporting III	S2	5	Stream Requirement
AY314	Business Finance II	S2	5	Stream Requirement
AY308	Taxation I	S1	5	Optional
AY319	Taxation II	S2	5	Optional
LW371	Alternative Dispute Resolution	S2	5	Optional
AY208	Business Finance I	S2	5	Optional

## Economics

*EC2100	Applied Microeconomics for Business	S1	5	Select if not taken in 2 <sup>nd</sup> year
EC3105	Econometrics	S1	5	Optional
EC388	Environmental and Natural Resource Economics	S1	5	Optional
EC345	Health Economics	S1	5	Optional
EC3101	Microeconomics and Public Policy	S1	5	Optional
EC369	Money & Banking	S1	5	Optional
*EC2101	Macroeconomics and the Business Environment	S2	5	Select if not taken in 2 <sup>nd</sup> year
EC3106	Behaviour Finance	S2	5	Optional
EC3100	Economics and Philosophy	S2	5	Optional
EC362	Economics of Financial Markets	S2	5	Optional
EC3102	Macroeconomics and Public Policy	S2	5	Optional
EC429	Marine Economics	S2	5	Optional
EC386	Public Economics	S2	5	Optional

## Digital Business and Analytics

MS218	Database Technologies	5	S1	Stream Requirement
MS414	Business Intelligence and Analytics	5	S1	Stream Requirement
MS222	Decision Modelling and Analytics	5	S2	Stream Requirement
LW3152	Law and Analytics	5	S2	Stream Requirement
MS3111	The Future of Technology in Work and Society II	5	S2	Stream Requirement
MS4101	Implementing Digital Innovation	5	S2	Stream Requirement

## Language

GR317	Legal German	YL	10	
LW380	Legal French	YL	10	
GA4112	Gaeilge & Scileanna Cumarsáide 4: Teanga an Dlí	YL	10	
SH325	Spanish Language III	YL	10	
LW337	Administrative Law I	S1	5	
LW3104	Applied Legal Theory	S1	5	
LW333	Comparative Competition Law	S1	5	
LW357	Environmental Law I	S1	5	
LW3151	Equality and Law	S1	5	
LW513	Evidence I	S1	5	
LW383	Information Technology Law	S1	5	
LW212	Labour Law I	S1	5	
LW3159	Lawyering, Technology and Innovation	S1	5	



LW339	Independent Research	S1	5
LW3156	Revenue Law I	S1	5
LW3158	Animal Law	S2	5
LW371	Alternative Dispute Resolution	S2	5
LW365	Criminology	S2	5
LW358	Environmental Law II	S2	5
LW514	Evidence II	S2	5
LW419	Health and Safety Law	S2	5
LW232	Housing Law and Policy	S2	5
LW356	Industrial and Intellectual Property Law	S2	5
LW364	International Trade Law	S2	5
LW3119	Jurisprudence	S2	5
LW216	Labour Law II	S2	5
LW3152	Law and Analytics	S2	5
LW3153	The Protection of Prisoner Rights under International Law	S2	5
LW3157	Revenue Law II	S2	5
LW3150	Family and Child Law	YL	10

### Law General

LW337	Administrative Law I	S1	5
LW3104	Applied Legal Theory	S1	5
LW333	Comparative Competition Law	S1	5
LW357	Environmental Law I	S1	5
LW3151	Equality and Law	S1	5
LW513	Evidence I	S1	5
LW383	Information Technology Law	S1	5
LW212	Labour Law I	S1	5
LW3159	Lawyering, Technology and Innovation	S1	5
LW339	Independent Research	S1	5
LW3156	Revenue Law I	S1	5
LW3158	Animal Law	S2	5
LW371	Alternative Dispute Resolution	S2	5
LW365	Criminology	S2	5
LW358	Environmental Law II	S2	5
LW514	Evidence II	S2	5
LW419	Health and Safety Law	S2	5
LW232	Housing Law and Policy	S2	5
LW356	Industrial and Intellectual Property Law	S2	5
LW364	International Trade Law	S2	5
LW3119	Jurisprudence	S2	5
LW216	Labour Law II	S2	5
LW3152	Law and Analytics	S2	5
LW3153	The Protection of Prisoner Rights under International Law	S2	5
LW3157	Revenue Law II	S2	5
LW3150	Family and Child Law	YL	10

### Law and Innovation

LW383	Information Technology Law	S1	5
LW3159	Lawyering, Technology and Innovation	S1	5
MS414	Business Intelligence & Analytics	S1	5
LW333	Comparative Competition Law	S1	5
LW371	Alternative Dispute Resolution	S2	5
MS222	Decision Modelling and Analytics	S2	5

MG2101	Entrepreneurial Venture Development	S2	5
LW356	Industrial and Intellectual Property Law	S2	5
MS4101	Implementing Digital Innovation	S2	5
LW3152	Law and Analytics	S2	5

### Legal Professions

LW337	Administrative Law I	S1	5	Stream Requirement
LW513	Evidence I	S1	5	Stream Requirement
LW514	Evidence II	S2	5	Stream Requirement
LW3119	Jurisprudence	S2	5	Stream Requirement
LW3104	Applied Legal Theory	S1	5	
LW333	Comparative Competition Law	S1	5	
LW357	Environmental Law I	S1	5	
LW3151	Equality and Law	S1	5	
LW383	Information Technology Law	S1	5	
LW212	Labour Law I	S1	5	
LW3159	Lawyering, Technology and Innovation	S1	5	
LW339	Independent Research	S1	5	
LW3156	Revenue Law I	S1	5	
LW3158	Animal Law	S2	5	
LW371	Alternative Dispute Resolution	S2	5	
LW365	Criminology	S2	5	
LW358	Environmental Law II	S2	5	
LW419	Health and Safety Law	S2	5	
LW232	Housing Law and Policy	S2	5	
LW356	Industrial and Intellectual Property Law	S2	5	
LW364	International Trade Law	S2	5	
LW216	Labour Law II	S2	5	
LW3152	Law and Analytics	S2	5	
LW3153	The Protection of Prisoner Rights under International Law	S2	5	
LW3157	Revenue Law II	S2	5	
LW3150	Family and Child Law	YL	10	

### Management

LW212	Labour Law I	5	S1	Stream Requirement
MG328	Human Resource Management	5	S1	Stream Requirement
LW216	Labour Law II	5	S2	Stream Requirement
MG3102	Work in a Global Context	5	S2	Stream Requirement
MG3119	Strategy	5	S2	Stream Requirement
LW3159	Lawyering, Technology and Innovation	5	S1	Optional
MG2101	Entrepreneurial Venture Development	5	S2	Optional
LW371	Alternative Dispute Resolution	5	S2	Optional

\* Students are obliged to complete Core modules as part of their 60 ECTS for the year

Every effort will be made to offer the modules as listed, each module may not be available every year. Modules are offered subject to availability of staff and sufficient demand.

**Please note that your timetable may change during the year. The most up-to-date timetable can be found on <https://www.universityofgalway.ie/business-public-policy-law/school-of-law/students/timetables/>**